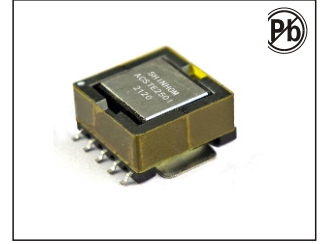


SMT CURRENT SENSE TRANSFORMERS

ACSTE25 SERIES



FEATURES:

- Very low DC resistance
- Different turns ratios
- Very small package
- 1500Vrms isolation voltage between windings
- Sensed Current – primary rated for 50 Amps

APPLICATIONS:

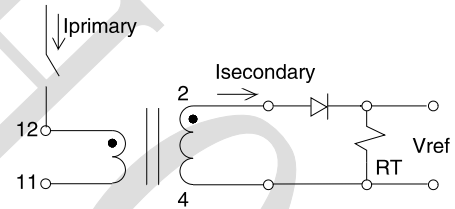
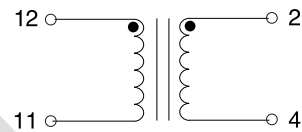
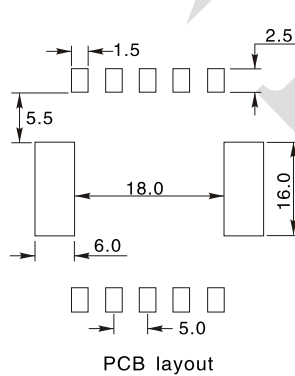
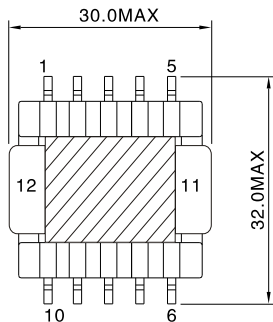
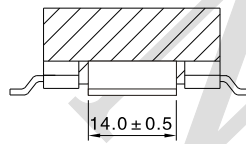
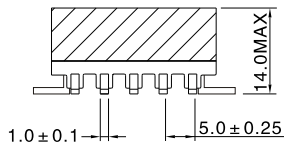
- Switching power supplies
- Feedback control
- Overload sensing
- Load drop/Shut down detection

ELECTRICAL CHARACTERISTICS: @25°C

Part Number	Turns ratio	Sec. Inductance (mH) 100KHz,0.1V	DCR (mΩ)Max		Rated input current (A) Max
			Pri	Sec	
ACSTE2501	1:100	15.0 min.	0.2	1200	50
ACSTE2502	1:150	34.0 min.	0.2	1600	50
ACSTE2503	1:200	60.0 min.	0.2	2000	50

PHYSICAL CHARACTERISTICS & WINDING

Dimension: mm



APPLICATION CIRCUIT

NOTES

- 1.Primary current of 50 A causes 40°C temperature rise from 25°C ambient. Higher current causes a greater temperature rise
- 2.Operating temperature : -55°C to 125°C
- 3.Storage temperature Component: -40°C to +105°C
- 4.Tape and reel packaging: -40°C to +80°C
- 5.Moisture sensitivity level(MSL) 1 (Unlimited floor life at <30deg /85% relative humidity)
- 6.Inductance measured between secondary pins at 100kHz, 0.1 Vrms, 0 Adc
- 7.Frequency range: 50KHz to 500KHz
- 8.Inductance measured at 0Adc on HP 4284A LCR Meter or equivalent
- 9.DCR measured on Chroma 16502 micro-ohmmeter or equivalent

Specifications subject to change without notice

SHINHOM ELECTRONICS ENTERPRISE CO.,LTD. No.8,YanTa Northern Road Zip:710054 Tel:0086-29-87851838 Fax:0086-29-87851840